



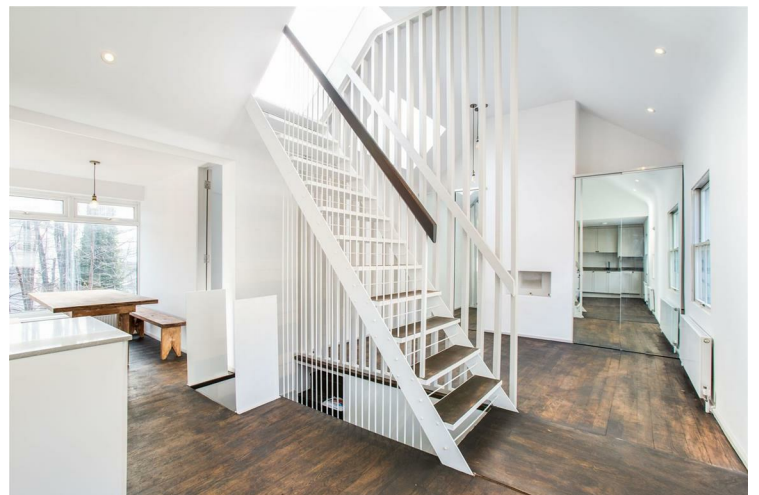
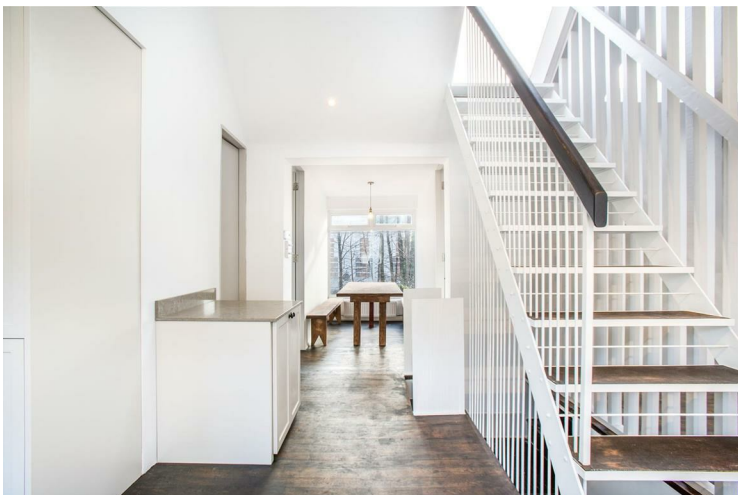
14 ROSEMONT ROAD  
LONDON

£2,800 PER

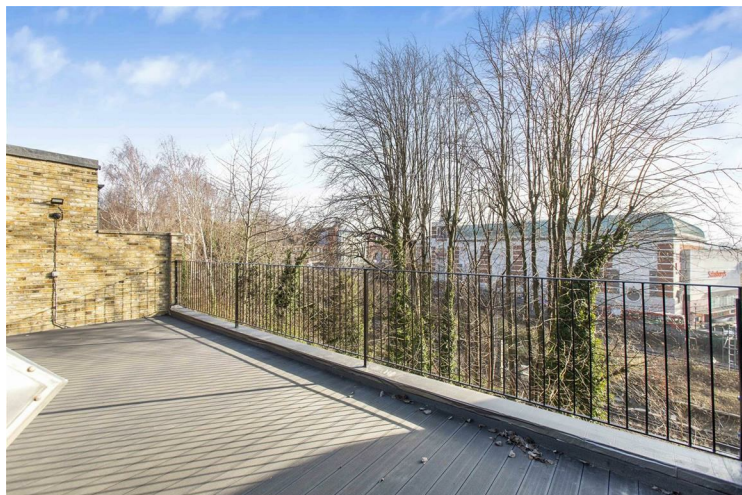
A beautiful first-floor maisonette offering two generous double bedrooms and a stunning, unusually large private roof terrace - perfect for entertaining or relaxing outdoors.

Finished to a high standard throughout, the property features a bright and spacious open-plan living area with a sleek, fully integrated kitchen including a dishwasher, fridge/freezer, and washer/dryer. The contemporary bathroom suite is luxuriously appointed, and both bedrooms are equally well-proportioned, making the home ideal for sharers or a couple seeking extra space.

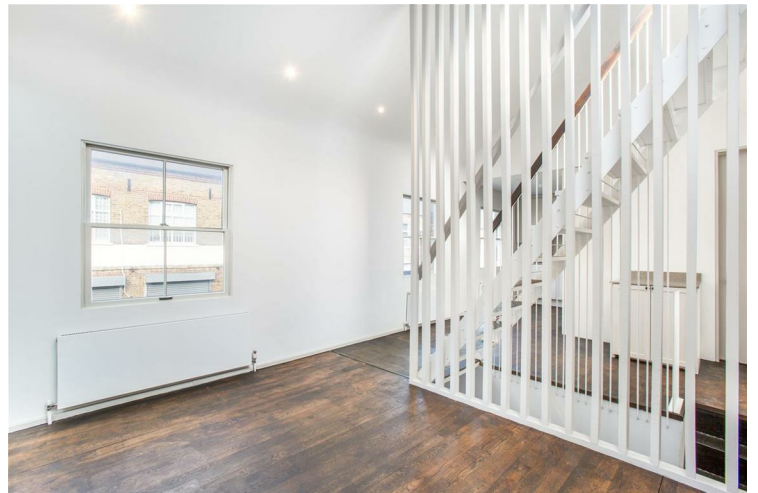
Ideally located on a quiet residential street just a 4-minute walk from Finchley Road Station (Jubilee, Metropolitan & Overground lines), you're moments from the vibrant shops, cafés, and restaurants of Finchley Road and within easy reach of the charming Hampstead Village.



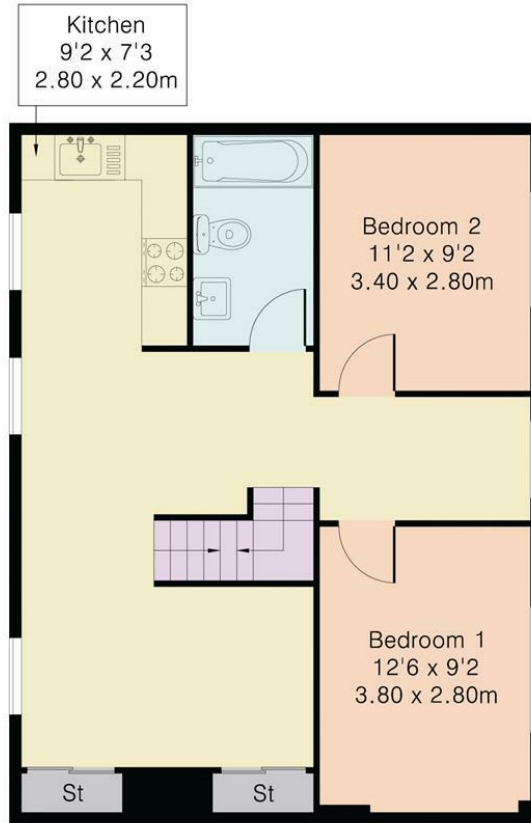
- Two Double Bedrooms • One Modern Bathroom • Large Private Roof Terrace • Excellent Transport Links



• Council Tax Band: C (Camden) • EPC Rating: D • Available September 2026 • Unfurnished



Approximate Gross Internal Area 655 sq ft – 61 sq m



First Floor



Energy Efficiency Rating		Current	Potential
Very energy efficient - lower running costs			
(92 plus) <b>A</b>			
(81-91) <b>B</b>			
(69-80) <b>C</b>			
(55-68) <b>D</b>		55	59
(39-54) <b>E</b>			
(21-38) <b>F</b>			
(1-20) <b>G</b>			
Not energy efficient - higher running costs			
<b>England &amp; Wales</b>		EU Directive 2002/91/EC	

Agents Note: Whilst every care has been taken to prepare these particulars, they are for guidance purposes only. All measurements are approximate and are for general guidance purposes only and whilst every care has been taken to ensure their accuracy, they should not be relied upon and potential buyers/tenants are advised to recheck the measurements

Noble House Services - Lettings 02070888220  
 5 Paper Mill Buildings, City Garden enquiries@nh-services.co.uk  
 Row, www.nh-services.co.uk  
 Islington  
 London  
 N1 8DW

